

THIRD READING

No. 14-83

COUNCIL OF WOLLASTON SESSION, July 11 1983

Moved by [Signature] Seconded by [Signature]

That a By-law to rezone pt. lot 32 Con. 9 from Rural to Rural Residential

as reported by the Committee of the Whole be read a third time, passed and numbered _____ and that the said by-law be signed by the _____ and clerk, sealed with the seal of the Corporation, and be engrossed in the By-law Book.

Carried. [Signature]

SECOND READING

No. 14-83

COUNCIL OF Wollaston SESSION, July 11 1983

Moved by [Signature] Seconded by [Signature]

That a By-law to rezone pt. Lot 32 Con. 9 from Rural to Rural Residential

be read a second time and be referred to a committee of the whole council.

Carried. [Signature]

FIRST READING

No. 14-83

COUNCIL OF WOLLASTON SESSION, JULY 11 1983

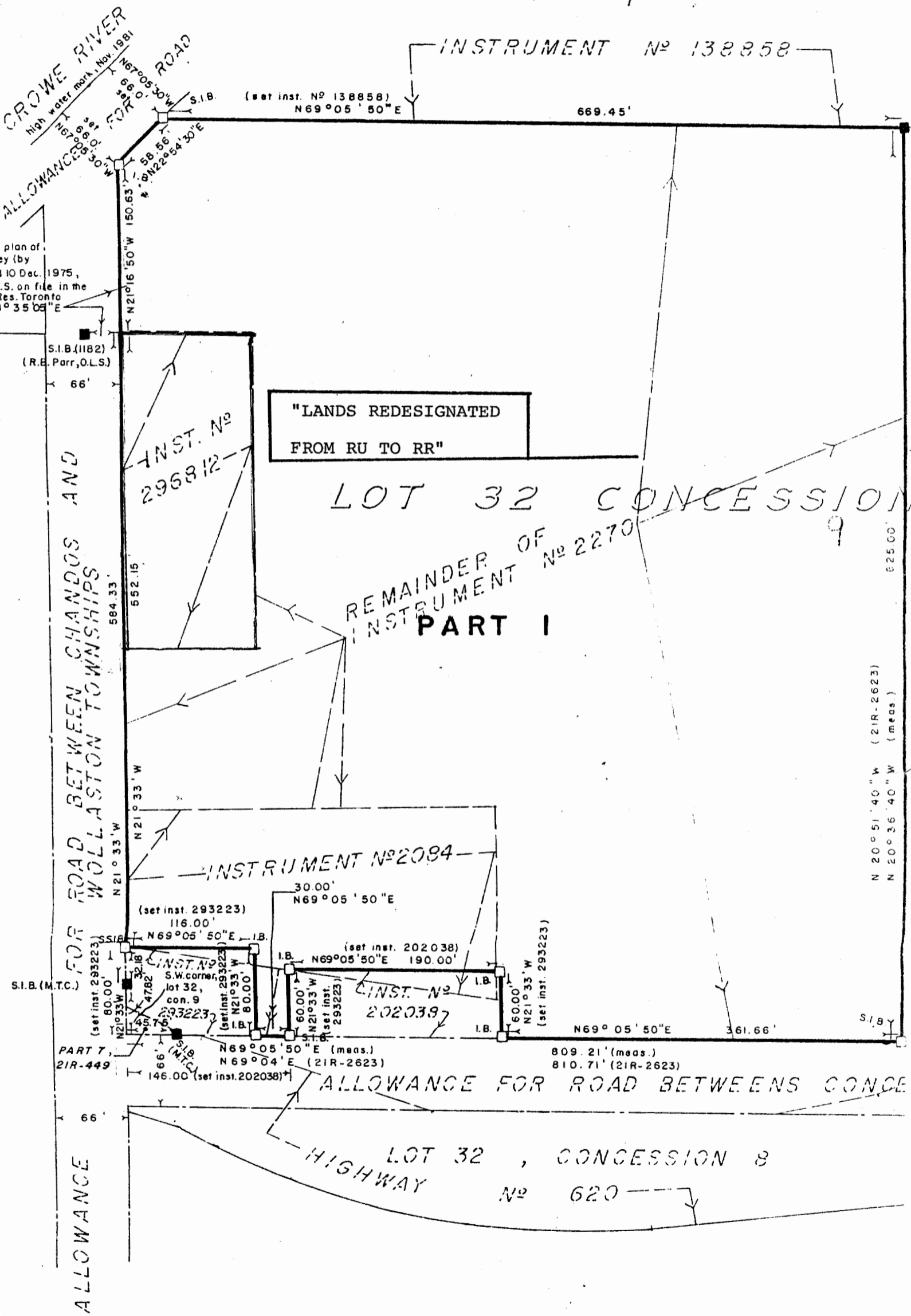
Moved by [Signature] Seconded by [Signature]

That a By-law to REZONE PT. LOT 32 CON 9 FROM RURAL TO RURAL RESIDENTIAL

be received and read a first time.

Carried. [Signature]

No. 426— MUNICIPAL WORLD LIMITED, ST. THOMAS, ONT.



INSTRUMENT N° 138858

(set inst. N° 138858)
N69°05'50"E

669.45'

CROWE RIVER
high water mark, Nov. 1981
ALLOWANCE FOR ROAD
N67°05'30"W
66.0'
N67°05'30"W
66.0'
S.I.B.
N21°16'50"W 150.63'
58.56'
N22°54'30"E

plan of
by
10 Dec. 1975,
S. on file in the
Res. Toronto
35°08'E

S.I.B. (1182)
(R.E. Parr, O.L.S.)
66'

"LANDS REDESIGNATED
FROM RU TO RR"

LOT 32 CONCESSION 9

REMAINDER OF
INSTRUMENT N° 2270
PART I

ROAD BETWEEN CHANDOS AND
WOLLASTON TOWNSHIPS

INST. N°
296812

584.33'

552.15'

N21°33'W

N21°33'W

INSTRUMENT N° 2084

30.00'
N69°05'50"E

(set inst. 293223)
116.00'

N69°05'50"E

S.I.B. (M.T.C.)

(set inst. 293223)
80.00'

N21°33'W

(set inst. 293223)
47.82'

(set inst. 293223)
45.76'

(set inst. 293223)
45.76'

(set inst. 293223)
45.76'

(set inst. 293223)
45.76'

(set inst. 293223)
45.76'

(set inst. 293223)
45.76'

(set inst. 293223)
45.76'

(set inst. 293223)
45.76'

(set inst. 293223)
45.76'

(set inst. 293223)
45.76'

(set inst. 293223)
45.76'

(set inst. 293223)
45.76'

(set inst. 293223)
45.76'

(set inst. 293223)
45.76'

S.W. corner,
lot 32,
con. 9

(set inst. 293223)
N21°33'W

(set inst. 293223)
80.00'

(set inst. 293223)
80.00'

(set inst. 293223)
80.00'

(set inst. 293223)
80.00'

(set inst. 293223)
80.00'

(set inst. 293223)
80.00'

(set inst. 293223)
80.00'

(set inst. 293223)
80.00'

(set inst. 293223)
80.00'

(set inst. 293223)
80.00'

(set inst. 293223)
80.00'

(set inst. 293223)
80.00'

(set inst. 293223)
80.00'

(set inst. 293223)
80.00'

(set inst. 293223)
80.00'

(set inst. 293223)
80.00'

(set inst. 202038)
190.00'

N69°05'50"E

(set inst. 293223)
60.00'

N21°33'W

(set inst. 293223)
60.00'

(set inst. 293223)
60.00'

(set inst. 293223)
60.00'

(set inst. 293223)
60.00'

(set inst. 293223)
60.00'

(set inst. 293223)
60.00'

(set inst. 293223)
60.00'

(set inst. 293223)
60.00'

(set inst. 293223)
60.00'

(set inst. 293223)
60.00'

(set inst. 293223)
60.00'

(set inst. 293223)
60.00'

(set inst. 293223)
60.00'

(set inst. 293223)
60.00'

(set inst. 293223)
60.00'

(set inst. 293223)
N21°33'W

(set inst. 293223)
60.00'

(set inst. 293223)
60.00'

(set inst. 293223)
60.00'

(set inst. 293223)
60.00'

(set inst. 293223)
60.00'

(set inst. 293223)
60.00'

(set inst. 293223)
60.00'

(set inst. 293223)
60.00'

(set inst. 293223)
60.00'

(set inst. 293223)
60.00'

(set inst. 293223)
60.00'

(set inst. 293223)
60.00'

(set inst. 293223)
60.00'

(set inst. 293223)
60.00'

(set inst. 293223)
60.00'

(set inst. 293223)
60.00'

(set inst. 293223)
60.00'

(set inst. 293223)
60.00'

(set inst. 293223)
60.00'

(set inst. 293223)
60.00'

N69°05'50"E

361.66'

809.21' (meas.)

810.71' (21R-2623)

ALLOWANCE FOR ROAD BETWEEN CONCESSIONS

LOT 32, CONCESSION 8
HIGHWAY N° 620

N 20° 51' 40" W (21R-2623)
N 20° 36' 40" W (meas.)

625.00'

ALLOWANCE

PART 7,
21R-449

66'

66'

66'

66'

66'

66'

THE CORPORATION OF THE
TOWNSHIP OF WOLLASTON
BY-LAW NO. 14-83

A BY-LAW TO AMEND THE "TOWNSHIP OF WOLLASTON RESTRICTED
AREA (ZONING) BY-LAW" OTHERWISE KNOWN AS BY-LAW NO. 8-79

WHEREAS the Township of Wollaston Restricted
Area (Zoning) By-Law No. 8-79 zones Part of Lot 32, Concession
9 as Rural.

AND WHEREAS an application for Consent has
been filed with the Hastings County Land Division Committee
and has been granted conditional that the zoning be changed
to "Rural Residential"

AND WHEREAS THE Council of the Corporation of
the Township of Wollaston deems it to be advisable to amend
the Township's Restricted Area (Zoning) By-Law No. 8-79 to
rectify the zoning at this location;

NOW THEREFORE , the Council of the Corporation
of the Township of Wollaston hereby enacts as follows:

1. Schedule "A" of the Township of ^{Wollaston} Restricted Area
(zoning) By-Law is amended by changing the zoning designation
within part of Lot 32, Concession 9 lying east of the Wollaston
-Chandos Boundary Road and north of Highway No. 620, as indicated
on Schedule "A" attached hereto and forming part of this By-Law
from "Rural Zone (RU)" to "Rural Residential" (RR).

This By-Law shall become effective on the date of passing hereof,
if no objection is filed with the Clerk within the time provided.

If a notice of objection is filed with the Clerk, this By-Law shall
become effective on the date of passing hereof subject to re-
ceiving the approval of the Ontario Municipal Board.

Read a first Time this 11 day of July , 1983.

Read a second time this 11 day of July , 1983.

A Hunter
REEVE

Betty Wilson
CLERK

Read a third time and finally passed this 11 day of July , 1983.

A Hunter
REEVE

Betty Wilson
CLERK